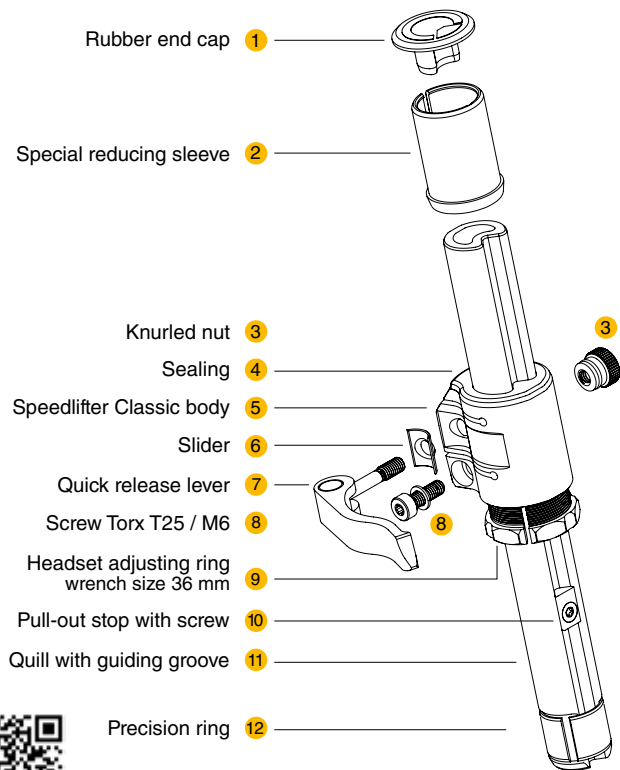


EXPLODED VIEW - SPEEDLIFTER CLASSIC 1 1/8"



by.schulz GmbH
 Bühler Straße 121
 D-66130 Saarbrücken
 GERMANY

Tel : +49 (0) 681 - 95 97 25 0
 Fax : +49 (0) 681 - 95 97 25 20
 info@byschulz.com



EN



Extension length
Travel [mm]

T 6	60
T 8	80
T10	100
T12	120
T15	150

Sleeve
[mm]

	39.5
	41.5
	44.5
	49.5

Fork shaft
inner Ø
[mm]

	24.4
	24.5
	24.6
	25.4

INSTALLATION REQUIREMENTS (Excerpt from the installation instructions)

To install the Speedlifter, the bike must be equipped with a threadless metal A-head headset and 1 1/8" (28.6 mm) outer diameter.

No threaded or carbon fork shaft allowed!



The Speedlifter quill diameter must be compatible with the inner diameter of the fork shaft. The Speedlifter system quills are currently available for metal fork shafts with an inner diameter of 24.4 / 24.5 / 24.6 mm and 25.4 mm. Furthermore with the fork mounted, the upper end of the fork shaft must protrude at least 46 mm above the headset to install the Speedlifter.

The fork shaft end protruding over the A-Head headset must have a vertical slot at the rear, as seen in the riding direction. This about 4 mm wide and a total of 24.5 mm long vertical slot ends in a 6 mm hole. The Speedlifter Simple Draw Tool or the Profi Cut Tool can be helpful for preparation.



In combination with the Speedlifter quill **11**, 1 1/8" A-Head stems (option: angle-adjustable) must only be installed together with the supplied, slotted Speedlifter aluminum reducing sleeve.

These 1 1/8" A-head stems must be clampable at the rear as seen in the riding direction!

The stem length must not be more than 135 mm.



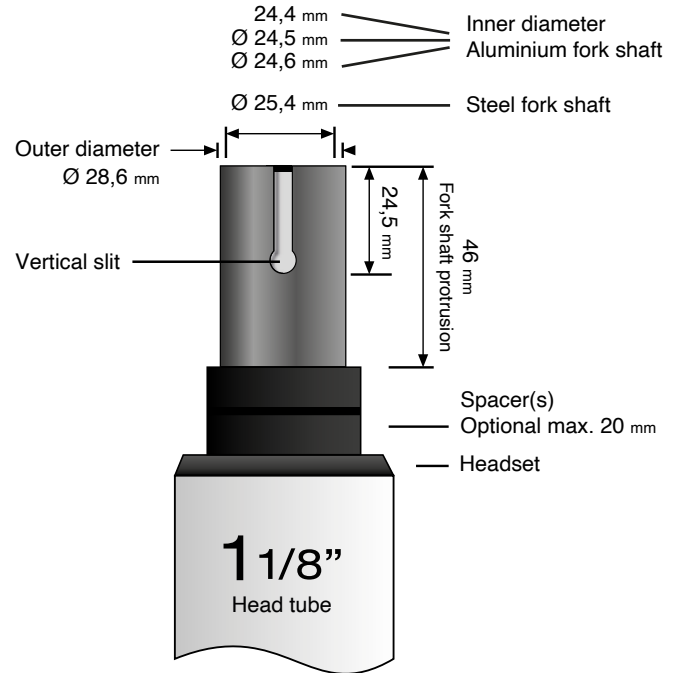
The stem reducing sleeve must have at least the same available clamping height as that of the stem. An exception is the Speedlifter Twist Pro SDS which has an integrated angle-adjustable stem.

After adjusting the headset, a maximum of 3 threads may be freely visible on the adjustment ring. **9**



The total height of the spacer rings used, which are mounted under the Speedlifter, must not be more than 20 mm.

Speedlifter systems are compatible with threadless metal fork shafts with 1 1/8" outer diameter (= 28.6 mm) and the requirements shown here.



ATTENTION : The shortening and slotting of the A-Head fork shaft as well as the installation of the Speedlifter system must be carried out professionally.

In case of incorrect execution, there is a risk of accident! Handlebar and stem must be compatible with each other and in good mounting condition. The brake and shift cables as well as electrical cable connections to the handlebar must be long enough to avoid bends at the highest possible handlebar position and to make sure that they do not restrict the steering in any way. If necessary, the cables must be re-routed." The person who installs the Speedlifter system is responsible for all risks of damage in the case of an incorrect installation. We therefore strongly recommend the installation by a qualified bicycle dealer.