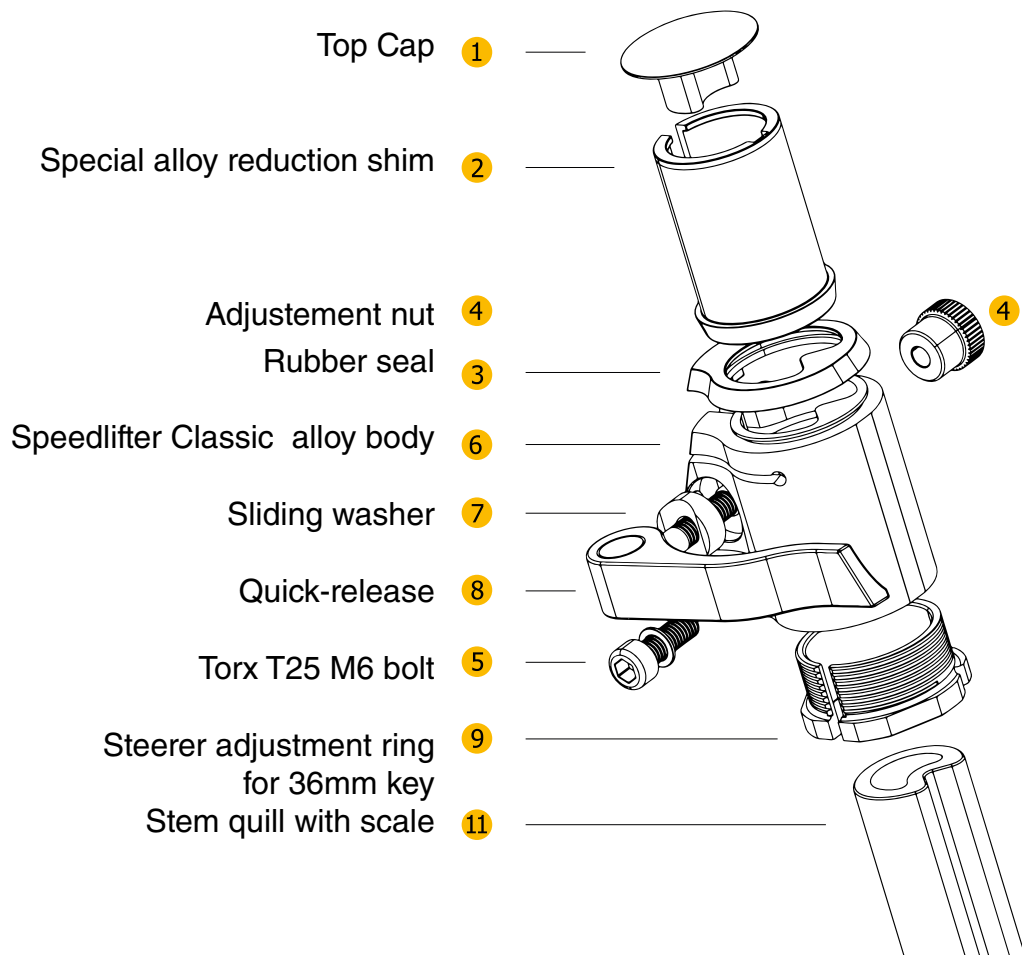


EXPLOSION DRAWING / SINGLE PARTS



 *speed* **lifter**
classic



INSTALLATION REQUIREMENTS

(Extraction of the complete mounting guide)

The Speedlifter can only be installed on bikes with a front fork of the A-Head type with a threadless metal head tube and an outer diameter of 1 1/8" (28.6 mm).

Not for threaded fork head tubes



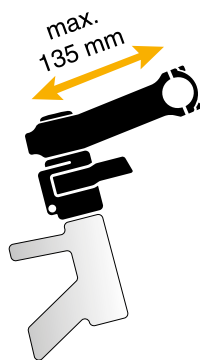
The diameter of the Speedlifter quill must approximately match the inner diameter of the fork head tube. In addition, when the front fork is correctly mounted to the bicycle's frame, the upper end of the fork head tube must protrude from the headset by at least 46 mm.

The height of the Speedlifter Classic itself is about 52 mm, for the Speedlifter Twist it is 57mm. Handlebar height can be continuously adjusted from this base to a maximum height of 15 cm (T15), the point at which the extraction safety-stop prohibits further upward travel of the quill.

The protruding end of the fork's head tube, when viewed from the rear of the bike and looking in the direction of travel, must have a small slot. This slot should

be approximately 4 mm wide and 24.5 mm long, and it should end in a 6 mm drilled hole. When the Speedlifter is correctly installed, this vertical slot ends at the middle cross-section between parts and of the Speedlifter body unit

Only 1 1/8" A-Head stems (or adjustable stems, also known as "Major Taylor outriggers"), in conjunction with the Speedlifter slotted alloy shim (2; included with delivery), can be mounted on the Speedlifter's quill. The 1 1/8" A-Head stem must have clamp units at the rear of the quill ! The length of the stem extension cannot exceed 135 mm.



The top of the stem must be flush with the top of the shim.

After adjusting the steering head bearings, only 3 of the adjustment ring's/thread turns should be visible. The total height of the spacers mounted under the Speedlifter may not exceed 20 mm.

Speedlifter Systems are compatible with threadless metal fork tube heads with an outer diameter of 1 1/8" (= 28,6 mm) and with the requirements pictured here.



The person who installs your Speedlifter system must make sure that the handlebars and stem are compatible with each other, and that they are in good condition. The brake and derailleur cables as well as any electrical cables must be long enough to keep them from buckling and kinking even when the handlebars are at their highest possible setting. Likewise, in no way should these cables adversely affect steering range and efficiency. Reroute them if necessary. Do not alter or substitute other components for the components of your Speedlifter system.